

PUGLIA

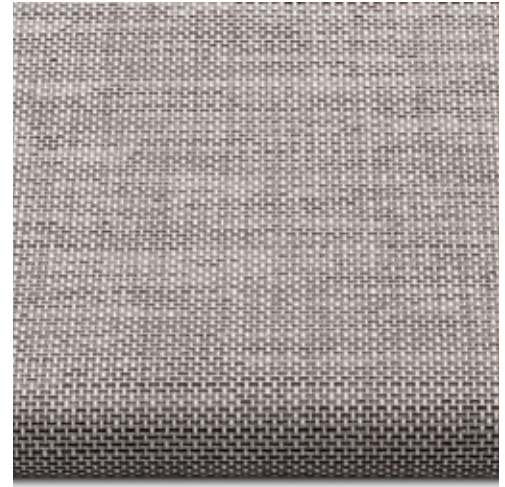
Puglia combines sheer fabric with a classic linen look. The mixture of yarn colors create a natural feeling enhanced by the soft color palette of the collection, allowing a subtle view to the outside world.

TRANSPARENT



GENERAL INFORMATION

Number of Colors	6	
Material Composition	100% Polyester	
Width	280 cm	110.00 in
Thickness (+/- 5%)	0,46 mm	0.0181 in
Weight (+/- 5%)	193 gr/m ²	5.69 oz/yd ²
Roll Length	40 m	43.74 yd



SPECIAL VALUES

Color Fastness to Light	> 5 (DIN ISO 105-B02)
Finish	Heat Setting
PVC Free	Yes
Lead Free	Yes
Halogen Free	Yes
Formaldehyde Free	Yes
Phthalates Free	Yes
Flame Retardancy	N/a
Fungal Resistance	N/a

Humid Environment	No
Suitable for Workstations	No
Tensile Strength in Warp	112,3 daN/5 cm (ASTM D5035-11)
Tensile Strength in Weft	107,8 daN/5 cm (ASTM D5035-11)
Tearing Strength in Warp	11,5 daN/5 cm (ASTM D2261)
Tearing Strength in Weft	10,5 daN/5 cm (ASTM D2261)
Manufacturing Procedure	Cold Cut
Care Instructions	Damp Cloth

SUITABLE FOR



Roller



Vertical



Pleated

CARE & HANDLING

Remove dust with vacuum cleaner or compressed air. Do not use solvents or any abrasive substance which might damage the coating of the fabric. Clean with a sponge, soft brush or cloth. Leave the blind down until completely dry.

LIGHT AND SOLAR PROPERTIES

Item Number	Color	EU Standard Tested to DIN EN 410						
		Rv	Tv	Av	TUV	Rs	Ts	As
72001	White	52%	44%	4%	28%	50%	45%	5%
72002	Ivory	46%	38%	16%	22%	48%	48%	4%
72003	Beige	38%	34%	28%	21%	43%	45%	12%
72004	Timber	25%	28%	47%	19%	37%	37%	26%
72005	Gray	23%	26%	51%	22%	34%	35%	31%
72006	Render	35%	32%	33%	19%	41%	39%	20%

Rv = Light Reflection

Tv = Light Transmittance

Av = Light Absorption

Rs = Solar Reflection

Ts = Solar Transmittance

As = Solar Absorption

TUV = Ultraviolet Transmittance

TOTAL ENERGY PERMEABILITY DEGREE GTOT AND REDUCE FACTOR FC

GTOT: DIN EN ISO 52022-1 / FC: DIN EN 14501								
Item Number	Single glazing		Double glazing with air interspace		Double glazing with low emission degree and argon interspace		Triple glazing with low emission degree and argon interspace	
	$U_g=5,8 \text{ W}/(\text{m}^2\text{K})$ $g=0,85$		$U_g=2,9 \text{ W}/(\text{m}^2\text{K})$ $g=0,76$		$U_g=1,2 \text{ W}/(\text{m}^2\text{K})$ $g=0,59$		$U_g=0,8 \text{ W}/(\text{m}^2\text{K})$ $g=0,55$	
	Gtot	Fc	Gtot	Fc	Gtot	Fc	Gtot	Fc
72001	0,48	0,57	0,47	0,61	0,41	0,70	0,40	0,72
72006	0,52	0,62	0,51	0,67	0,44	0,75	0,42	0,77
72004	0,55	0,65	0,53	0,70	0,46	0,77	0,44	0,79

Gtot Value = The total transmission value of solar energy through a combination of window and sun protection

FC-Value = Reduction factor (from 0-1) of the fabric concerning solar energy

COLORS



72001
White



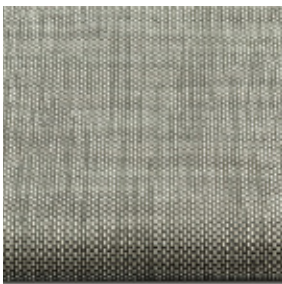
72002
Ivory



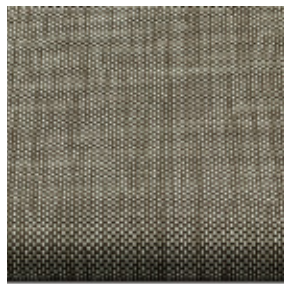
72003
Beige



72004
Timber



72005
Gray



72006
Render