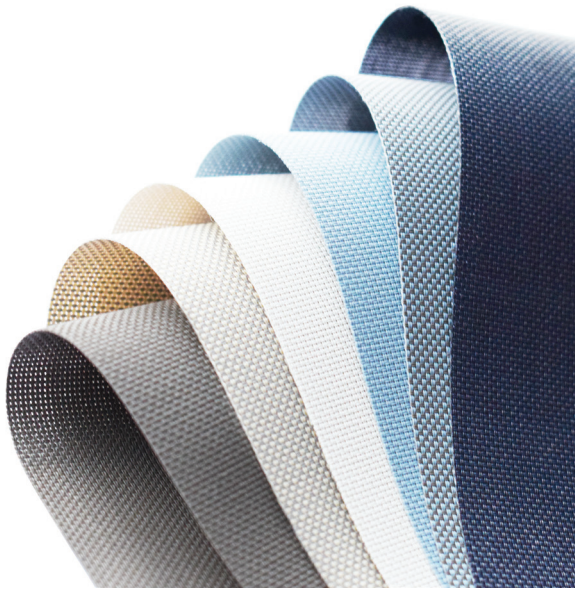


FASHION SCREEN 3%

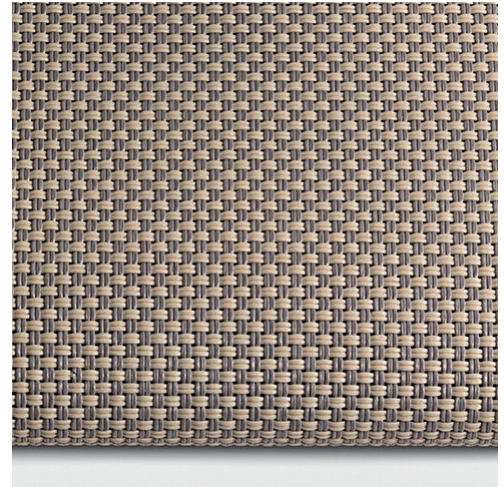
Textured sheer screen fabrics are the perfect addition to your home or work space. If you still want to admire the view but at the same time control the sunlight and glare, Fashion screen will do it for you with style.

TRANSPARENT



GENERAL INFORMATION

Number of Colors	12	
Material Composition	30% Polyester / 70% PVC	
Openness Factor	3%	
Width	280 cm	110.00 in
Thickness (+/- 5%)	0,56 mm	0.0220 in
Weight (+/- 5%)	420 gr/m ²	12.39 oz/yd ²
Roll Length	25 m	27.35 yd



SPECIAL VALUES

Color Fastness to Light	8 (DIN ISO 105-B02)
Finish	Heat Setting
PVC Free	No
Lead Free	Yes
Halogen Free	Yes
Formaldehyde Free	GB/T 2912.1
Phthalates Free	Yes
Flame Retardancy	DIN 4102 B1 / EN 13773-1 / NFPA-701/ California U.S. Title 19 / CAN/ULC-S109 / BS 5867 Part 2

Fungal Resistance	Yes (ASTM G2149)
Antimicrobial	Yes (ASTM E2149)
Humid Environment	Yes
Suitable for Workstations	Yes
Tensile Strength in Warp	≥ 1300 N/5 cm (ISO 13934-2)
Tensile Strength in Weft	≥ 1200 N/5 cm (ISO 13934-2)
Tearing Strength in Warp	≥ 20 N/5 cm (ISO 4674-1)
Tearing Strength in Weft	≥ 20 N/5 cm (ISO 4674-1)
Manufacturing Procedure	Ultrasonic Cutting
Care Instructions	Damp Cloth

SUITABLE FOR



Roller



Panel



Vertical

CARE & HANDLING

Remove dust with vacuum cleaner or compressed air. Do not use solvents or any abrasive substance which might damage the coating of the fabric. Clean with a sponge, soft brush or cloth. Leave the blind down until completely dry.

Version 20220810



The information provided herein is based upon tests believed to be reliable. The values are intended only as a source of information. A legally binding guarantee of specific properties is not to be inferred from our specifications. They are given without guarantee and do not constitute a warranty.

LIGHT AND SOLAR PROPERTIES

Item Number	Color	EU Standard Tested to DIN EN 410						
		Rv	Tv	Av	TUV	Rs	Ts	As
S-2001	Silver Birch	-	-	-	-	-	-	-
S-2002	Almond Oil	-	-	-	-	-	-	-
S-2003	Wild Dove	-	-	-	-	-	-	-
S-2004	Moon Rock	-	-	-	-	-	-	-
S-2005	Hemp	-	-	-	-	-	-	-
S-2006	Gravel	-	-	-	-	-	-	-
S-2007	Vetiver	-	-	-	-	-	-	-
S-2008	Celadon	49%	7%	44%	5%	43%	11%	46%
S-2009	Arona	-	-	-	-	-	-	-
S-2010	Castlerock	20%	6%	74%	5%	20%	8%	72%
S-2011	Black Red	6%	5%	89%	5%	8%	6%	86%
S-2012	Dark Slate	-	-	-	-	-	-	-

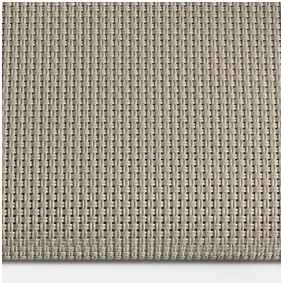
Rv = Light Reflection **Tv** = Light Transmittance **Av** = Light Absorption
Rs = Solar Reflection **Ts** = Solar Transmittance **As** = Solar Absorption **TUV** = Ultraviolet Transmittance

TOTAL ENERGY PERMEABILITY DEGREE GTOT AND REDUCE FACTOR FC

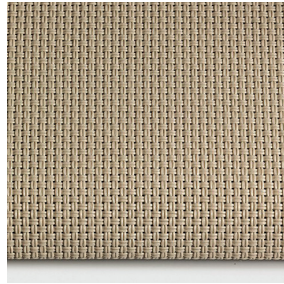
GTOT: DIN EN ISO 52022-1 / FC: DIN EN 14501								
Item Number	Single glazing		Double glazing with air interspace		Double glazing with low emission degree and argon interspace		Triple glazing with low emission degree and argon interspace	
	$U_g=5,8 \text{ W}/(\text{m}^2\text{K})$ $g=0,85$		$U_g=2,9 \text{ W}/(\text{m}^2\text{K})$ $g=0,76$		$U_g=1,2 \text{ W}/(\text{m}^2\text{K})$ $g=0,59$		$U_g=0,8 \text{ W}/(\text{m}^2\text{K})$ $g=0,55$	
	Gtot	Fc	Gtot	Fc	Gtot	Fc	Gtot	Fc
S-2008	0,48	0,56	0,48	0,63	0,43	0,73	0,41	0,75
S-2010	0,60	0,71	0,60	0,78	0,50	0,85	0,48	0,87
S-2011	0,67	0,79	0,66	0,86	0,54	0,92	0,51	0,93

Gtot Value = The total transmission value of solar energy through a combination of window and sun protection
FC-Value = Reduction factor (from 0-1) of the fabric concerning solar energy

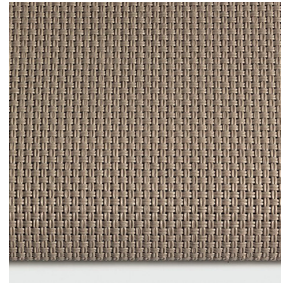
COLORS



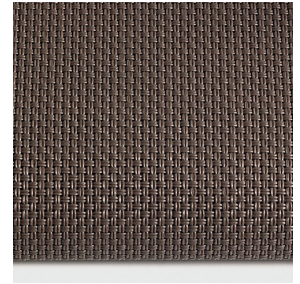
S-2001
Silver Birch



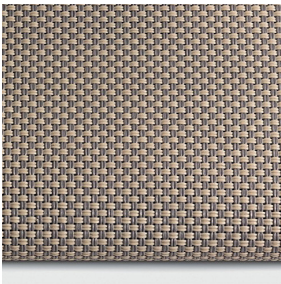
S-2002
Almond Oil



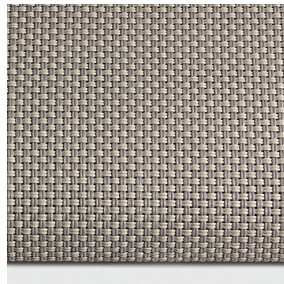
S-2003
Wild Dove



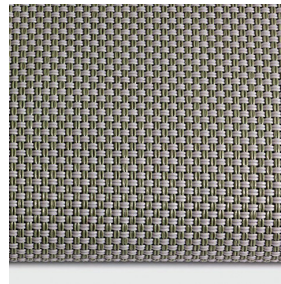
S-2004
Moon Rock



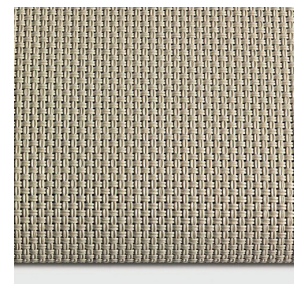
S-2005
Hemp



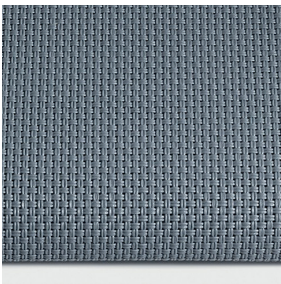
S-2006
Gravel



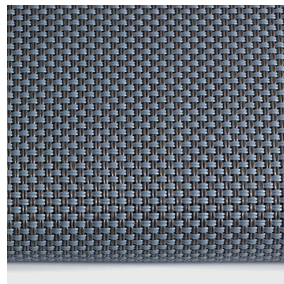
S-2007
Vetiver



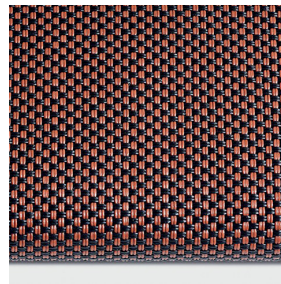
S-2008
Celadon



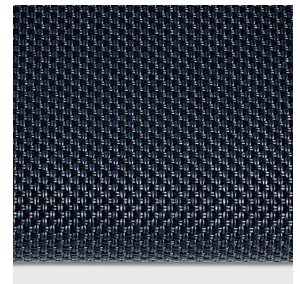
S-2009
Arona



S-2010
Castlerock



S-2011
Black Red



S-2012
Dark Slate